



HMS ECHO

WINTER 2021 NEWSLETTER UPDATE



PROTECTING OUR NATION'S INTERESTS

Happy New Year from everyone onboard

What's New

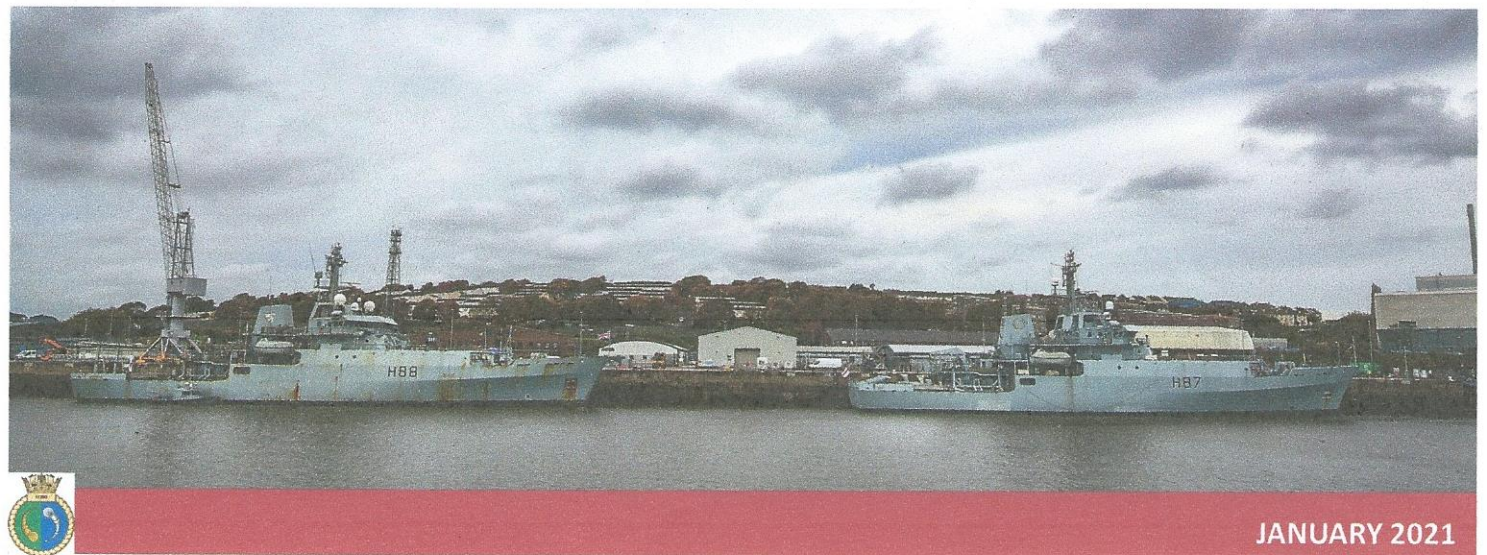
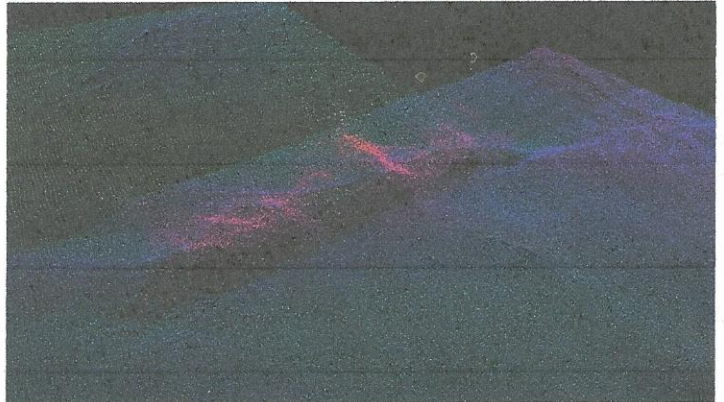
HMS ECHO has been keeping busy conducting pre deployment preps and expanding our survey capability around the UK; over the Christmas period we deployed to the Baltic.

Enhanced Survey Capabilities

Working off Plymouth in the build up to deployment HMS ECHO used a local WW1 wreck to test new and existing survey equipment onboard. The survey suit onboard was revamped and updated in preparation for further survey work later this year.

Our survey trials were carried out using the wreck of the SS East Point, a merchant steamer which was torpedoed off Plymouth in March, 1917 by German Submarine U-48.

During this period of survey trials HMS ECHO got the rare opportunity to interact with our sister ship HMS ENTERPRISE as she sailed home to Plymouth following a year long deployment in the Far East. Passing through the South Coast Exercise Areas we formed up and carried out an emotional set of OOW Manoeuvres before she proceeded on into an extensive re-fit period.



Covid and Christmas

The Covid19 pandemic has made it a challenging year onboard but we have fought through. Despite social distancing and closed gangway measures we still managed to enjoy the company of a Nathusius's Pipestrelle Bat .

The need for the ships company to isolate together, forming a Covid safe bubble, prior to deploying meant that we enjoyed our Christmas celebrations together. Despite the separation from family and friends we made the most of it in true ECHO style with carol services and Christmas treasure hunts.



Baltic Deployment

Towards the end of December we sailed for the Baltic. HMS ECHO rang in the New Year in a holding box off the Straits of Dover before beginning the transit North.

The route to the Baltic took us through the confined waters of the "Great Belt" between Norway and Sweden. The ships company took a moment to relax and enjoy the view as we passed under the Öresund Bridge connecting mainland Sweden with one of it's larger islands.





Interaction with our NATO Allies

As part of our Operations within the Baltic HMS ECHO was offered the opportunity to join Lithuanian Minehunter KURSIS in conducting a route survey of some of their port approaches. We also conducted a set of OOW manoeuvres which helped to develop the international cooperation between the Royal Navy and one of our NATO regional allies.



Looking Forward

HMS ECHO will remain operational in the Baltic for a period before returning to surveying operations in the UK ahead of a maintenance period in the Spring. Covid allowing we are hoping to open the gangway and invite you to catch up on our deployment news later this year. Until our next addition we wish you good health, fair winds and a following sea.

